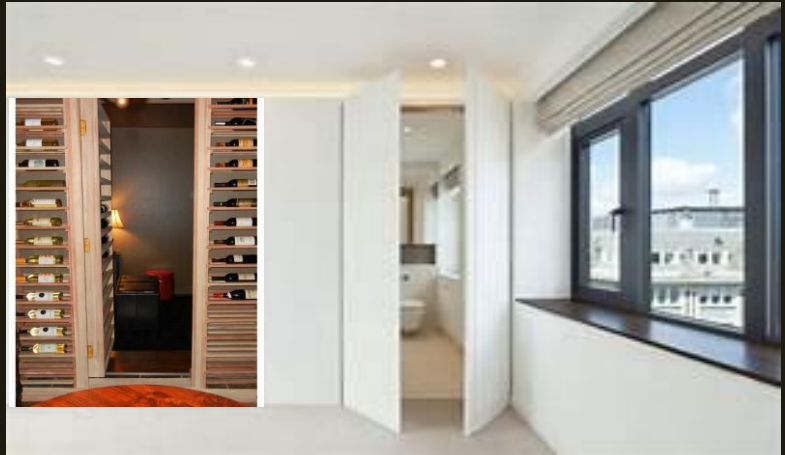
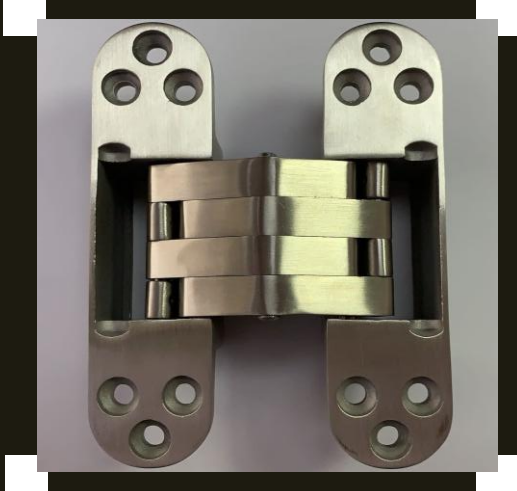




SOLID STAINLESS STEEL LINKS

SCH218-C
Concealed Hinge

BS EN1634
60 MINUTES



DOOR WEIGHT AND SIZE

The new "Marco Polo" heavy duty conceal invisible hinge are made of casted stainless steel grade 304 body with solid stainless steel links, are ideal for heavy duty door with extra-ordinary weight. SCH218-C is mainly for the door with 45-50mm door thickness, SCH220-C is designed for the thicker door upto 60mm.

For the standard door size: 900x2100x50mm - 3 nos. of 218 hinge is able to carry the door upto 120kg, additional 700mm add 1 hinge on.

SPECIFICATION:

- * FULL MORTISE INTO THE DOOR AND FRAME CANNOT BE SEEN FROM EITHER SIDE WHEN CLOSED.
- * DOOR THICKNESS NOT LESS THAN 45MM
- * 180 DEGREE SWINGS IN ONE DIRECTION
- * NO ADJUSTMENT NEEDED ONCE INSTALLED
- * SUITABLE FOR FIRE RATED DOOR
- * COMPLY TO BS EN 1935
- * STAINLESS STEEL GRADE 304 BODY
- * SOLID STAINLESS STEEL GRADE 304 LINKS
- * FOR DOOR UPTO 120 KG

AVAILABLE FINISH

- SATIN STAINLESS STEEL / HAIR LINE / US32D
- POLISHED STAINLESS STEEL / MIRROR / US32
- DUAL BLACK / MATT / US19
- ANTIQUE BRASS / BRONZE / US5
- ANTIQUE COPPER / COPPER / US11

MARCO POLO ARCHITECTURAL HARDWARE